



**SOPE**

**SOCIETY OF PEDIATRIC ECHOCARDIOGRAPHY**  
Quarterly Newsletter

**SOPE Mission Statement**

*To provide a unique environment for the pediatric and adult congenital echocardiography community to collaborate with other imaging societies to promote networking, education, advocacy, research, and program development*

**Message from SOPE President, Beth Printz, MD and Co-Chair, Jennifer Acevedo, RDCS**

On behalf of the Society of Pediatric Echocardiography (SOPE) Board and Subcommittees, we welcome you to enjoy this Fall SOPE newsletter. This year has already gotten off to a great start for SOPE. We want to thank everyone who joined us at the Irish Whisper for our networking event in National Harbor, Maryland, during this past June's American Society of Echocardiography Scientific Sessions. Despite the venue being cozy, it was fun finally catching up with everyone in person. Virtually, SOPE has had a busy summer, sponsoring an interactive mentorship workshop and 2 SPEED fellow echo bootcamp sessions, including a remarkable session by the legendary Dr. Ira Parness about segmental cardiac anatomy (watch for the video link for those who missed it!).



We are planning new initiatives that we will work on over the coming months with hopes of engaging even more members of our pediatric echo community, from sonographers and fellows just starting out on their 'pediatric echo journey' to our more 'seasoned' peds echo folks. In addition to continuing the successful monthly SPEED sessions and mentorship programs, we will organize a virtual educational symposium in the winter and a virtual vendor showcase in early spring. We are also looking into having SOPE help sponsor an Advanced Noninvasive Imaging Fellowship match and would like to increase our outreach to international pediatric cardiologists and sonographers. The SOPE-affiliated Echo Collaborative has submitted its first manuscript and has other interesting quality-related projects in development. Our newest PEASE subcommittee will be working on behalf of sonographer education and advocacy, which is (cont pg 2)

**Thank You to Our Institutional Sponsors!**



**Inside this issue**

SOPE Executive Board .....2  
 What is an Institutional Sponsor .3  
 Save the Dates. ....4  
 Subcommittee Updates.....4-6  
 Job Postings.....6  
 Board Member Spotlight.....7  
 On My Days Off .....8  
 Photos from the Social!.....9  
 SOPE Social Media Links.....10

**Special points of interest**

- What are the benefits of becoming an Institutional Sponsor? Page 9
- What's happening on our SOPE Subcommittees? pages 4 through 6
- Get to know our SOPE Board Secretary, Jennifer Co-Vu, Page 7
- What does Brittany Byrd do on her days off? Page 8
- Were you There? Photos from the SOPE Social! Page 9

## Message from SOPE President (cont.)

critical given the present shortage of pediatric cardiac sonographers. We will overhaul our website to make it more user-friendly, timely and relevant to the entire SOPE community. We also hope to add more institutional sponsors to our five current sponsors, whom we would like to acknowledge for their continued support (Cincinnati Children's, Lurie Children's, Nemours, Seattle Children's, and Stanford-Lucile Packard Children's Hospitals).

SOPE would not be where we are today without the unwavering support and guidance of Shubhi Srivastava and Bernadette Richards, not only over the past year as President and Sonographer Co-Chair, but for their many years of hard work on behalf of SOPE. Jen and I have big shoes to fill!

With Sincere Gratitude,  
On Behalf of the SOPE Board and Subcommittees,

Beth and Jennifer

Jennifer Acevedo, ACS, RDCS  
Beth Printz, MD, PhD



**SOPE** | SOCIETY OF PEDIATRIC  
ECHOCARDIOGRAPHY

### How to Contact Us

SOPE

1500 Sunday Drive

Suite 102

Raleigh, NC 27607, USA

Phone: 919-863-9488

Fax: 919-787-4916

Email:

[tfoy@firstpointresources.com](mailto:tfoy@firstpointresources.com)

## SOPE Executive Board Members

**President:** Beth Printz MD, PhD

Rady Children's Hospital San Diego, University of California San Diego

**Co-Chair:** Jennifer Acevedo, ACS, RDCS

Lurie Children's Hospital of Chicago

**Vice President:** Sujatha Buddhé, MD

Seattle Children's Hospital, University of Washington

**Treasurer:** Seda Tierney, MD

Lucile Packard Children's Hospital, Stanford University

**Secretary:** Jennifer Co-Vu, MD

University of Florida Congenital Heart Center

**Sonographer at Large:** Sarah Haysom RDCS, RDMS

The Heart Institute, Cincinnati Children's Hospital

**Immediate Past President:** Shubhika Srivastava, MD

Wilmington, Delaware

Nemours Children's Hospital, Thomas Jefferson University

**SOPE Executive Director:** Tara Foy, [tfoy@FirstPointResources.com](mailto:tfoy@FirstPointResources.com)

FirstPoint Management Resources

## New SOPE Board Members

We welcome two newly elected members of the SOPE Executive Board.

Jennifer Co-Vu, MD is our new Board Secretary. Get to know more about Jen in our Board Spotlight article: page 7

Sarah Haysom, RDCS, is our new Sonographer at Large. Here are a few tidbits that Sarah shared. We'll go more in-depth with a Board Spotlight in an upcoming newsletter.



- *Life-long Cincinnati native. I graduated from Kettering College in 2010 and have spent my whole career at Cincinnati Children's Hospital Medical Center. I have been the administrative lead over the pediatric echocardiography lab since 2019. I am passionate about serving people. This overflows in my care of patients but also those I am responsible to lead. Our lab culture has drasti-*

*cally improved in the last 4 years and our team's expertise and growth is evidence of it. Currently developing a pediatric echo track/program with the hopes of increasing interest, engagement, career growth, and accessibility to pediatric echo.*

- *I'm a wife, mother to 4 sweet girls, and a 120lb golden retriever pup named Obi.*
- *We are loyal Dayton Flyer basketball fans.*
- *I serve as Secretary on a non-profit board that supports orphans & widows in the Dominican Republic*
- *I'm active in our church, lead a community group, and coordinate kids' ministry (primarily kindergarten and first grade classes)*
- *I co-lead a group called "Mom's in Prayer" for our school district that supports approximately 300 parents and focuses on providing encouragement to teachers, bus drivers, cafeteria workers, and administrative leaders throughout the school year.*

## What is an Institutional Sponsorship?

You may have noticed our listing of institutional sponsors on the front page of this newsletter. Here's the scoop... To promote institutional involvement, we are offering the following opportunities for institutional sponsorship for 2023:

### Platinum \$4000

- ◆ Waiver of membership fees for all physicians, sonographers and fellows at your institution for each year of sponsorship
- ◆ Large size logo in newsletters, website and membership meeting background screen
- ◆ Free job advertisements in newsletters
- ◆ An article highlighting your institution annually in a SOPE quarterly newsletter
- ◆ One SOPE SPEED event to highlight the institution's research, clinical specialties, and/or work in progress
- ◆ Sonographer education and career growth
- ◆ Access to standardized protocols
- ◆ Higher priority for echo collaborative, QI and subcommittee opportunities

### Gold \$2000

- ◆ Waiver of individual membership fees for up to 10 physicians and 10 sonographers at your institution for each year of sponsorship, all fellows are free

- ◇ Small logo in newsletters, website and membership meeting background screen
- ◇ Free job advertisements in newsletters
- ◇ Sonographer education and career growth
- ◇ Access to standardized protocols
- ◇ Higher priority for echo collaborative, QI and subcommittee opportunities

The benefits of Institutional Sponsorship include:

- Recognition of your institution on the Society of Pediatric Echocardiography website Sponsorship page, including a listing of the institution, the institution's logo, and list of all SOPE members from the institution
- Recognition of Institutional Sponsorship on electronic and print communications of the SOPE including quarterly newsletter, and acknowledgement in membership meetings for each year of sponsorship

Your support will allow the SOPE to achieve its goal of providing a unique avenue for congenital and pediatric echocardiographers, particularly for career advancement of sonographers.





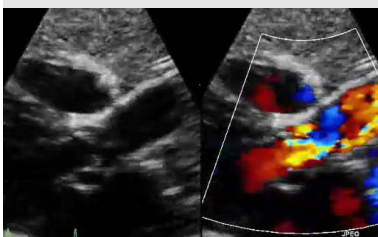
## SOPE 2023-2024 Important Dates

November 16, 2023  
Membership Meeting

March 5, 2024  
Technology Advances

May 16, 2024  
Meet the Fellows

June 15, 2024  
SOPE Social @ ASE



## Career Development Subcommittee News

The Career Development Committee held the second webinar in our series on career building earlier this summer. This webinar series focuses on the five pillars of career development: program building, coaching/mentoring, work-life balance, individual career advancement, and communication.

Our first two webinars this year each featured a special guest, Dr. Shubhika Srivastava and Dr. Julie Glickstein. They both gave outstanding talks on program development and the basics of coaching and mentorship in medicine, which led to engaging Zoom break-out group discussions. These webinars are an amazing opportunity for both physicians and sonographers, in all stages of their careers, to network, build connections, and develop mentor and coaching relationships. We aim to encourage even more attendance with our next session in this inaugural year, and we plan to maintain the mentor/mentee groupings as the webinar series continues, in order to foster lasting relationships. Stay tuned for the fall edition of our mentorship webinar, the date will be announced soon!

Our subcommittee is comprised of some outstanding minds from the field of pediatric echo; we have attending physician and sonographer representation: **Subcommittee Co-Chairs:** Ruchira Garg MD, Andrew Rodenbarger MD, Katie Jo Stauffer BS, RDCS

**Subcommittee Members:** Nadine Choueiter MD, Nicole Cresalia MD, Michael DiLorenzo MD, Tyler Fick MD, Julie Glickstein MD, Simon Lee, MD, Anitha Parthiban MD, and Shubhika Srivastava MD

## PEASE Subcommittee News

The Pediatric Echocardiography Advocacy and Sonographer Education (PEASE) subcommittee is busy at work on pediatric sonographer training guidelines. The hope is that these guidelines will serve as a shared resource for all pediatric programs who train new graduate or adult sonographers learning pediatric and congenital echocardiography. It includes timelines as well as competencies generated through resource sharing from members of the committee. Our fall PEASE subcommittee meeting will shift focus back to sonographer work related musculoskeletal injuries to generate pediatric specific recommendations to prevent these injuries.

**Subcommittee Co-Chairs:** Bernadette Richards RDCS, Garick Hill, MD

**Subcommittee Members:** Curt Degroff MD, Pierre Wong MD, Allyson Doucet BS RDCS, Michele Skrobot RDCS, Joan Lipinski RDCS, Danielle Labadie RDCS, Riley Bigelow RDCS, Luciana Young MD, Lisa Elliot RDCS, Michael DiMaria MD, Joey Goulding RDCS, Sara Shreve RDCS

## Communication Subcommittee News

It has been an exciting year for the Communications Subcommittee under the leadership of Janet Barnes and Jason Williams. We have been hard at work maintaining our social media presence and even throwing in some Instagram live story surveys during our fantastic SPEED talks.

Please like, link, join, follow any or all of the following – SOPE is on: Facebook, X (formerly Twitter), Instagram, LinkedIn, TikTok (rumor has it there is a sweet video modeling SOPE gear up!) and more to come...

The new logo is slowly making its way across our branding with a new image to usher SOPE into a future full of opportunities for social engagement, networking, and education.

**Subcommittee Co-Chairs:** Jason Williams MD; and Janet Barnes RDCS

**Subcommittee Members:** Jen Co-Vu MD; Joanne Chiu MD; Beth Printz MD; Melissa Wasserman RDCS RCCS; Jason Johnson MD; Jennifer Acevedo ACS RDCS FASE; Sujatha Buddhé MD; Elena Kwon MD; Simone Jhaveri MD

## SOPE Online Library

The SOPE Library is birthed from the Education Subcommittee as a repository to house educational materials related to the Pediatric Echocardiography community. The Education Subcommittee has vetted each of the documents housed within the library. We hope this collection of materials, books and media aide in the development of careers and to broaden the scope of knowledge of our community. The library is available to SOPE members:

[SOPE Library | SOPE \(sopeonline.org\)](#)

## Education Subcommittee News

Monthly meetings of the committee are on the third Thursday of the month. Monthly 30 min webinars-Society of Pediatric Echocardiography Education Dates (SPEED)- occur on the third Tuesday of the month 8 pm ET/ 5 pm PT

### New this year: Free 0.5 CEUs to SOPE Members

SPEED Topics this past quarter:

ECHO and ECMO

RV Imaging in Tetralogy of Fallot

Inaugural Fellow Bootcamp Part 1: Intro to Echo, Echo Physics and Knobology

Inaugural Fellow Bootcamp Part 2: Segmental Anatomy by Dr. Ira Parness

Upcoming SPEED Topics:

October: Heart in Focus: Sonographer and Surgeon Perspectives on Epicardial Echo

November and December: Holiday Winter Break

January: Imaging the Cardiac Surgeries of Another Era


HCM Stress echo imaging tips, Single Ventricle vs Biventricular Repair, Postoperative echo after Norwood/Hybrid, Pocus Guidelines, and many more!!!

Future projects: Question of the Week, "How To Echo" for beginners, and more!

**Subcommittee Co-Chairs:** Jennifer Co-Vu, MD, FASE, FAAP, FACC & Neha Soni-Patel, MD, BS, RDCS, RCCS, FASE

**Subcommittee Members:** Seda Tierney, MD, Ray Lorenzoni, MD, Carolyn Wilhelm, MD, Shannon Nees, MD, Jenna Keelan, MD, Nitin Maddan, MD, Shivani Patel, MD, Ruchika Karnik, MD, Dawn Park, RDCS, RDMS, Shubhi Srivastava, MD

**Fellows-In-Training Members:** Katherine Glover, DO, Samantha Kops, MD, Emily Ribiero, MD, Charles Simpkin, DO



The SOPE Education Committee Presents:

# SPEED Heart in Focus: Sonographer & Surgeon Perspectives on Epicardial Echo

October 17, 2023, at 8:00 PM EST | [Click Here to Register](#)

Speakers



Moderators

Kristine Guleserian, MD  
Medical City Children's Hospital  
Dallas

Katie Jo Stauffer, BS, RDCS  
Lucile Packard Children's Hospital  
Stanford, Palo Alto

Shivani Patel, MBBS, MS  
Ann & Robert Lurie Children's Hospital  
Chicago

Shannon Nees, MD  
Nemours Children's Health  
Delaware

A recording of this past event will be posted in the SOPE online library SOON!

## Echo Collaborative Subcommittee News

### Career Opportunities:

- ⇒ **Seattle Children's** is seeking a Pediatric Cardiac Sonographer based in Anchorage, AK. For details click here: <https://careers-seattlechildrens.icims.com/jobs/49871/cardiac-echo-sonographer/job>
- ⇒ **Seattle Children's** is also seeking a Pediatric Cardiac Sonographer based in Seattle. For details click here: <https://careers-seattlechildrens.icims.com/jobs/48694/echo-sonographer/job>

Do you have a Job Posting you would like advertised in this newsletter and on the SOPE website? It is FREE for SOPE members to advertise. For details follow this link [Career Center | SOPE \(sopeonline.org\)](#), or contact

Tara Foy at  
[tfoy@firstpointresources.com](mailto:tfoy@firstpointresources.com)  
To get your jobs listed today!

### VOLUNTEER OPPORTUNITY

**Are you a member with skills in editing and design? Love our newsletter?**

**We're looking for assistance to help create our quarterly newsletter. Little writing involved, but editing, communication and design skills are helpful. The work takes 10-12 hours per quarter, plus monthly communications subcommittee meetings.**

**Contact Tara at SOPE  
[tfoy@firstpointresources.com](mailto:tfoy@firstpointresources.com)  
If interested.**

The Echo Collaborative Subcommittee is very excited that they are just about to submit their first collaborative paper, a baseline manuscript titled: **Improving Diagnostic Accuracy Prior to Congenital Heart Defect Surgery: A Multi-Center Initiative**. They will be getting started with interventions in a try to decrease errors. Names of those involved are below. Congratulations for all the hard work and excellent collaboration.

The subcommittee is also talking very preliminarily about another project addressing residual lesions after surgery.

#### Those involved in the first collaboration:

Shobha S. Natarajan, MD1, Kasey Chaszczewski, MD1,13, Christopher Penney1, Steve Amphah, PhD1, Douglas Ryba1, Andrea T. Kennedy1, Robert Olsen1, Shubhika Srivastava, MD2, Matthew Campbell, MD2, Mya Carney2, Carol Prospero2, Lisa Elliott2, Carlie Brewer3, Michelle Hite3, Michael DiMaria, MD3, Nitin Madan, MD4, Jennifer Nelson4, Seda Tierney, MD5, Meaghan Beattie, MD5, Ritu Sachdeva, MD6, Joan Lipinski6, Kenan W. D. Stern, MD7, Grace Kong, MD7, Preeta Dhanantwari, MD8, Carolyn Taylor9, Tammy Churchill9, Aura A. Sanchez Mejia, MD10, Deidra Abenlah Ansah, MD10, Anitha Parthiban, MD10, Hasti Sanandajifar, MD10, Sowmya Balasubramanian, MD11, David A. Parra, MD12, Kim Crumm, MD12, Corey Stiver, MD14, Aarti Bhat, MD15, Pei-Ni Jone, MD16, Stefani Samples, MD16, Kathleen Van't Hof, MD16, Curt DeGroff, MD, MSEE17, Dalia Lopez-Colon, Ph.D.17, Meryl S. Cohen, MD1

- 1 Division of Cardiology, The Children's Hospital of Philadelphia, PA
- 2 Division of Cardiology, Nemours Children's Health, Wilmington, DE
- 3 Division of Cardiology, Children's Hospital Denver, CO
- 4 Division of Cardiology, Children's Mercy Hospital, Kansas City, MO
- 5 Division of Cardiology, Lucile Packard Children's Hospital, Stanford, CA
- 6 Division of Cardiology, Children's Healthcare of Atlanta, Atlanta, GA
- 7 Division of Cardiology, Mount Sinai Kravis Children's Hospital, New York NY
- 8 Division of Pediatric Cardiology, Long Island Jewish Medical Center at Northwell Health, New Hyde Park, NY
- 9 Division of Pediatric Cardiology, The Medical University of South Carolina, Charlestown, SC
- 10 Division of Cardiology, Texas Children's Hospital, Houston, TX
- 11 Division of Cardiology, C.S. Mott Children's Hospital, Ann Arbor, MI
- 12 Division of Cardiology, Monroe Carell Jr. Children's Hospital at Vanderbilt, Nashville TN
- 13 Division of Cardiology, Children's Wisconsin, Milwaukee, WI
- 14 Division of Cardiology, Nationwide Children's Hospital, Columbus, OH
- 15 Division of Cardiology, Seattle Children's Hospital, Seattle, WA
- 16 Division of Cardiology, Lurie Children's Hospital of Chicago, IL
- 17 Division of Pediatric Cardiology, University of Florida, Gainesville, FL

Echo Collaborative Subcommittee Co-Chairs: Shobha Natarajan, MD and Meryl Cohen, MD



## SOPE Board Member Spotlight - Jennifer Co-Vu, MD



Jennifer Co-Vu MD, FAAP, FACC, FASE, was recently elected to the SOPE Board position of secretary. She lives in Gainesville, Florida,

and works at the University of Florida Congenital Heart Center as an Associate Professor of Pediatrics, Radiology, Obstetrics, and Gynecology. She is the Director of the Fetal Cardiac Program and the Single Ventricle Program.

**Do you have kids/family you'd like to tell us about?**

*I am married to another physician and have a daughter Carly, 12 yo and Nico, 9 yo. We also have a pandemic puppy, a Pomeranian named Hercules Mulligan.*

*I am the first physician in my family of entrepreneurs and architects. I have three brothers, one of whom is a professional racecar driver.*

**What do you do to relax?**

*I love reading books (current reads: Lady Tan's Circle of Women and The Ballad of Songbirds and Snakes), and playing the piano, and I have recently taken up learning to*

*play the violin. I also love watching Netflix (current watch: Live to 100, Secret to Blue Zones, and Destined with You) and Disney+ (Ahsoka). During the pandemic, I discovered I have a green thumb and that gardening relaxes me!*



*My family also loves traveling, and we try to go to a new place and see a UNESCO Heritage Site every year! This year, we got to see the Alhambra in Grenada.*



*"I love puzzles, and most congenital heart disease (CHD) cases, especially complex CHD, are puzzles waiting to be solved through imaging"*

**What is your latest passion?**

*From a professional standpoint, I have a lot of interests! I'm a multimodality imager who is passionate about education, mentoring, quality improvement, research and innovation in imaging. I am also passionate about gender equity: I am president of the University of Florida Women in Medicine & Science, and I am also part of the American College of Cardiology Women in Cardiology Leadership Council, where I am currently the Women in Cardiology-Adult Congenital & Pediatric Cardiology workgroup chair.*

*From a personal standpoint, my current passion is collecting rare plants! I have a Night-Blooming Cereus, aka "Queen of the Night," which blooms once a year for one night, from the original cutting of Dr. Helen Taussig's plant! I also collect rare orchids and bonsais.*



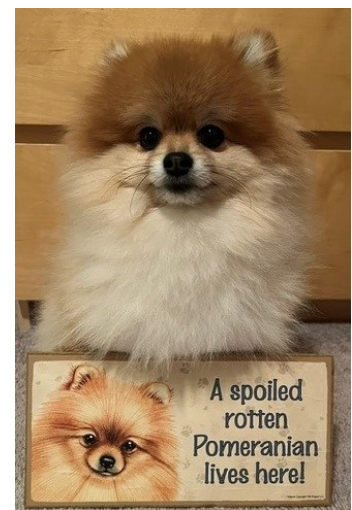
**How did you choose pediatric cardiology (or how did it choose you)?**

*My journey into being a Pediatric Cardiologist started as a resident when I was asked to do the Cardiology rotation instead of Nephrology because it was full. And I fell in love. I love puzzles, and most congenital heart disease (CHD) cases, especially complex CHD, are puzzles waiting to be solved through imaging. I am also a "fixer," so being able to provide a "fix" or a "palliation" to babies with CHD and being able to help them grow with a good quality of life is what fulfills me as a physician.*

**Anything else you'd like to share?**

*As per the request of Janet Barnes, aka SOPE Newsletter editor and friend, she wants me to share that I love volunteering in my community! I am currently a member of the Board of Directors of the Ronald McDonald Charities of North Central Florida and also a member of the board of directors for my*

*daughter's dance company, the Danscompany of Gainesville, where I am proud to be the Snacks Committee Co-chair (snacks are serious business for dancers!). But depending on the day, I am also a proud dance mom, golf mom, baseball mom, theater mom, and chess mom, but I am famously known in my household as the weak-link and master spoiler dog-mom of our pandemic puppy, Hercules Mulligan!*



## On My Days Off... *Featuring: Brittany Byrd, RDCS, FASE*

One can get so lost in the busy-ness of everyday life in the echo lab that sometimes it's easy to think that we don't have any more time for our hobbies. But sometimes our hobbies interconnect in a very real way with our work. The SOPE communications committee is inspired to continue this segment in our newsletter highlighting the hobbies and talents of our fellow imagers.

Brittany Byrd is a member of SOPE and a very busy travel sonographer – how does she find the time for hobbies? Brittany recently returned from Rwanda and Nicaragua where she volunteered with Team Heart and Project Health for Léon caring for patients with rheumatic and congenital heart disease. We hope you enjoy getting to know Brittany a little better in this exclusive **On My Days Off** Q&A.

### **Where do you currently practice and what is your current position/academic rank?**

*I have been working as a travel sonographer for the last 4 years. Currently, I am between contracts. This has given me the freedom to attend conferences and several global outreach events. I have been a cardiac sonographer for 13 years, all that in pediatrics and fetal echo. Since I started traveling, I have been able to work with lots of amazing hospitals and teams across the east coast.*

### **What are your talents/hobbies outside of medicine?**

*My biggest hobby is traveling. Other hobbies include cooking, reading and I dabble in crafting. Are donuts a hobby? I feel like they should be!*

### **When did you start your hobbies/talents?**

*Growing up, my family always took one big trip each summer. We drove up the west coast, we visited Moab, the four corners, we herded cattle in Montana (City Slicker style) and visited many of the national parks. When I was in high*



*school, I had an opportunity to travel to Germany with my German class. Since I had to get a passport for that, this opened many more travel destinations. During my time in Germany, I stayed with a German family, this immersive experience truly hooked me on learning about other cultures.*

### **What intrigued you about your hobbies/talents in particular?**

*My favorite part of traveling is seeing different parts of the world and having new experiences. I have been fortunate enough to go on multiple African safaris, chimpanzee trekking, swimming with whale sharks & manta rays, hot air ballooning, snowmobiling on a glacier, ziplining, caving, kayaking a glacier lake, and recently I checked hang gliding off my bucket list. There are so many experiences and beautiful places in the world that you will miss if you stay in one place.*

### **When do you find time for your hobbies amid your busy schedule as an imager?**

*We must make time for the things we love. Every day, in our field, we are unfortunately reminded how short life can be. Working as a traveler affords me the benefit of having control over my own schedule. I always have a trip planned and can often be found planning the next trip while I'm on an adventure.*



### **What are the advantages and disadvantages of having a hobby? Was it beneficial to you?**

*The biggest disadvantage of exploring is the cost. While the advantages are too numerous to count, traveling has increased my flexibility; I have so much more patience and traveling has increased my ability to adapt to my surroundings. All of this has had positive influence on my work. I have been able to meet some amazing people across the world and many have become close friends. I don't foresee settling down anytime soon, my bucket list gets longer with each adventure, hope to see you out there!*





**2023 SOPE Social ... at  
The Irish Whisper in  
National Harbor, MD**



**Were you  
there??**

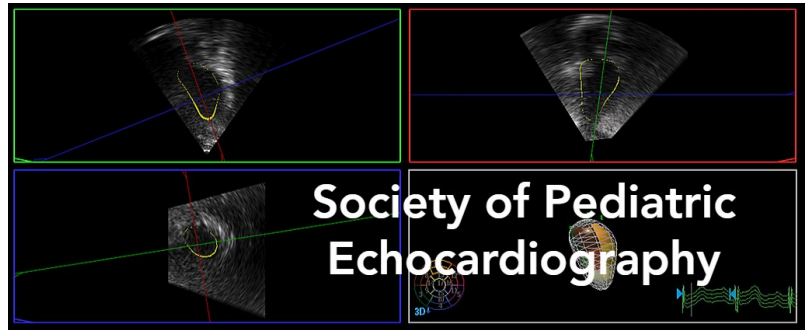
## What's on the SOPE Website?!

### Who Are We?

Since its formation in 1975, the Society of Pediatric Echocardiography (SOPE) has provided a forum for education, collaboration, and networking to the community of pediatric and adult cardiologists, fellows, and sonographers with a specific interest in the practice of pediatric and congenital echocardiography.

SOPE is an independent organization whose mission is to maintain and promote excellence in the echocardiographic examination of every fetus, infant, child, and adolescent as well as the adult with congenital heart disease. In addition, SOPE is committed to optimizing the training of pediatric echocardiographers and sonographers, having participated in the development of guidelines and standards for the nomenclature of cardiac septal structures as well as physician training in pediatric, fetal, and transesophageal echocardiography.

In collaboration with the American Society of Echocardiography, the American Heart Association, the American College of Cardiology, and the IAC Echocardiography, SOPE assists in the establishment and promotion of universal standards for the nomenclature and orientation of two-dimensional transthoracic and transesophageal echocardiography as well as contrast and fetal echocardiography.



The Society of Pediatric Echo's Website is ready for you:

Follow the tabs at the top of the main page to join or renew your membership, read the latest news, check out the library (!), look for upcoming events, and check out the job postings.

Did you know that as a SOPE member you can add a FREE job posting on the website? Contact Tara Foy.

[SOPE | Society of Pediatric Echocardiography \(sopeonline.org\)](https://sopeonline.org)



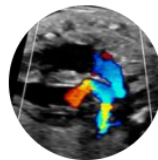
Follow us on X  
(formerly Twitter)

@SOPedsEcho

Follow us on  
Instagram



Follow us on Facebook



**Society of Pediatric  
Echocardiography**

@SOPEcho · Cardiologist

Follow us on  
LinkedIn



Follow us on TikTok  
@sope\_heart

